

**TECHNICAL MANUAL**

**DIRECT SUPPORT AND GENERAL SUPPORT MAINTENANCE  
REPAIR PARTS AND SPECIAL TOOLS LISTS  
(INCLUDING DEPOT MAINTENANCE REPAIR PARTS AND SPECIAL TOOLS)**

**FOR**

**SWITCHBOARDS, TELEPHONE, MANUAL  
SB-22/PT (NSN 5805-00-257-3602)  
AND  
SB-22A/PT (NSN 5805-00-715-6171)**

---

**HEADQUARTERS, DEPARTMENT OF THE ARMY**

**MAY 1978**



TECHNICAL MANUAL

No. 11-5805-262-34P

HEADQUARTERS  
DEPARTMENT OF THE ARMY  
WASHINGTON, DC, 22 May 1978

DIRECT SUPPORT AND GENERAL SUPPORT MAINTENANCE  
REPAIR PARTS AND SPECIAL TOOLS LISTS  
(INCLUDING DEPOT MAINTENANCE REPAIR PARTS AND SPECIAL TOOLS)  
FOR  
SWITCHBOARDS, TELEPHONE, MANUAL  
SB-22/PT (NSN 5805-00-257-3602)  
AND  
SB-22A/PT (NSN 5805-00-71 5-6171)

*Current as of 17 November 1977*

**REPORTING OF ERRORS**

You can improve this manual by recommending improvements using DA Form 2028-2 (Test) located in the back of the manual. Simply tear out the self-addressed form, fill it out as shown on the sample, fold it where shown, and drop it in the mail.

If there are no blank DA Forms 2028-2 (Test) in the back of your manual, use the standard DA Form 2028 (Recommended Changes to Publications and Blank Forms) and forward to the Commander, US Army Communications and Electronics Materiel Readiness Command, ATTN: DRSEL-MA-Q, Fort Monmouth, NJ 07703.

In either case, a reply will be furnished direct to you.

TABLE OF CONTENTS

	Page	Illus Figure
SECTION I. Introduction .....	1	
II. Repair parts list .....	5	
Group 0 0 Switchboards, Telephone, Manual SB-22/PT and SB-22A/PT .....	5	1,2
01 Telephone Circuit, Operators TA-221/PT .....	9	3,4
02 Telephone Circuit, Line Jack TA-222/PT .....	13	6
03 Handset-Headset H-144( )/U (See TM 11-5965-206-14P for parts)		
04 Accessory Kit MX-2915/PT (A Model only) .....	15	6
0401 Telephone Circuit, Line Jack TA-222/PT (Same as group 02)		
0402 Telephone Circuit, Trunk Jack TA-326/PT .....	17	7
05 Accessory Kit MX-230/PT and MX-230A/PT (Plain Model only) .....	21	8
0501 Telephone Circuit, Line Jack TA-222/PT (Same as group 02)		
SECTION III. Special tools list (Not applicable)		
IV. National stock number and part number index .....	22	

\* This manual supersedes TM 11-5805-262-35P, 23 December 1971.



## SECTION I INTRODUCTION

---

### 1. Scope

This manual lists spares and repair parts; special tools; special test, measurement, and diagnostic equipment ( TMDE ), and other special support equipment required for performance of direct support and general support maintenance of the SB-22/PT and SB-22A/PT. It authorizes the requisitioning and issue of spares and repair parts as indicated by the source and maintenance codes.

### 2. General

This Repair Parts and Special Tools List is divided into the following sections:

*a. Section II-Repair Parts List.* A list of spares and repair parts authorized for use in the performance of maintenance. The list also includes parts which must be removed for replacement of the authorized parts. Parts lists are composed of functional groups in numeric sequence, with the parts in each group listed in figure and item number sequence.

*b. Section III.-Special Tools List.* Not applicable.

*c. Section IV.-National Stock Number and Part Number Index.* A list, in National item identification number (NIIN) sequence, of all National stock numbers (NSN) appearing in the listings, followed by a list, in alphanumeric sequence, of all part numbers appearing in the listings. National stock numbers and part numbers are cross-referenced to each illustration figure and item number appearance.

### 3. Explanation of Columns

*a. Illustration.* This column is divided as follows:

(1) *Figure number.* Indicates the figure number of the illustration on which the item is shown.

(2) *Item number.* The number used to identify item called out in the illustration.

*b. Source, Maintenance, and Recoverability (SMR) Codes.*

(1) *Source code.* Source codes indicate the manner of acquiring support items for maintenance, repair, or overhaul of end items. Source codes are entered in the first and second positions of the Uniform SMR Code format as follows:

Code

*Definition*

PA—Item procured and stocked for anticipated or known usage.

XD—A support item that is not stocked. When required, item will be procured through normal supply channels.

#### NOTE

Cannibalization or salvage may be used as a source of supply for any items source coded above except those coded XA and aircraft support items as restricted by AR 700-42.

(2) *Maintenance code.* Maintenance codes are assigned to indicate the levels of maintenance authorized to USE and REPAIR support items. The maintenance codes are entered in the third and fourth positions of the Uniform SMR Code format as follows:

(a) The maintenance code entered in the third position will indicate the lowest maintenance level authorized to remove, replace, and use the support item. The maintenance code entered in the third position will indicate the following levels of maintenance:

Code

*Application/Explanation*

C-Crew or operator maintenance performed within organizational maintenance.

O-Support item is removed, replaced, used at the organizational level.

F-Support item is removed, replaced, used at the direct support level.

(b) The maintenance code entered in the fourth position indicates whether the item is to be repaired and identifies the lowest maintenance level with the capability to perform complete repair (i.e., all authorized maintenance functions). This position will contain one of the following maintenance codes:

Code

*Application/Explanation*

F-The lowest maintenance level capable of complete repair of the support item is the direct support level.

Z-Nonreparable. No repair is authorized.

(3) *Recoverability code.* Recoverability codes are assigned to support items to indicate the disposition action on unserviceable items. The recoverability code is entered in the fifth position of the Uniform SMR Code format as follows:

<i>Recoverability Codes</i>	<i>Definition</i>
Z-Nonreparable item.	When unserviceable, condemn and dispose at the level indicated in position 3.
F-Reparable item.	When uneconomically reparable, condemn and dispose at the direct support level.
D-Reparable item.	When beyond lower level repair capability, return to depot. Condemnation and disposal not authorized below depot level.

*c. National Stock Number.* Indicates the National stock number assigned to the item and will be used for requisitioning purposes.

*d. Part Number.* Indicates the primary number used by the manufacturer (individual, company, firm, corporation, or Government activity), which controls the design and characteristics of the item by means of its engineering drawings, specifications, standards, and inspection requirements, to identify an item or range of items.

**NOTE**

When a stock-numbered item is requisitioned, the repair part received may have a different part number than the part being replaced.

*e. Federal Supply Code for Manufacturer (FSCM).* The FSCM is a 5-digit numeric code listed in SB 708-42 which is used to identify the manufacturer, distributor, or Government agency, etc.

*f. Description.* Indicates the Federal item name and, if required, a minimum description to identify the item.

*g. Unit of Measure (U/M).* Indicates the standard of the basic quantity of the listed item as used in performing the actual maintenance function. This measure is expressed by a two-character alphabetical abbreviation (e.g., ea, in, pr, etc). When the unit of measure differs from the unit of issue, the lowest unit of issue that will satisfy the required units of measure will be requisitioned.

*h. Quantity Incorporated in Unit.* Indicates the quantity of the item used in the breakout shown on the illustration figure, which is prepared for a functional group, subfunctional group, or an assembly.

**4. Special Information**

*a.* Usable on codes are shown in the description column. Uncoded items are applicable to all models. Identification of the usable on codes used in this publication are:

<i>Code</i>	<i>Used on</i>
512	SB-22/PT
ABK	SB-22A/PT

*b.* The following publications pertain to the SB-22/PT, SB-22A/PT and its components:

TM 11-5805-262-12, Switchboards, Telephone, Manual SB-22/PT and SB-22A/PT

TM 11-5805-262-20P, Switchboards, Telephone, Manual SB-22/PT and SB-22A/PT

TM 11-5805-262-35, Telephone Manual SB-22/PT and SB-22A/PT

TM 11-5965-206-14P, Headset-Microphone H-91A/U; Handset-Headset H-144/U, H-144A/U, H-144B/U, and H-144C/U; and Headset-Microphone H-210/G

**5. How to Locate Repair Parts**

*a.* When National stock number or part number is unknown:

(1) *First.* Using the table of contents, determine the functional group within which the item belongs. This is necessary since illustrations are prepared for functional groups and listings are divided into the same groups.

(2) *Second.* Find the illustration covering the functional group to which the item belongs.

(3) *Third.* Identify the item on the illustration and note the illustration figure and item number of the item.

(4) *Fourth.* Using the Repair Parts Listing, find the figure and item number noted on the illustration.

*b.* When National stock number or part number is known.

(1) *First.* Using the Index of National Stock Numbers and Part Numbers, find the pertinent National stock number or part number. This index

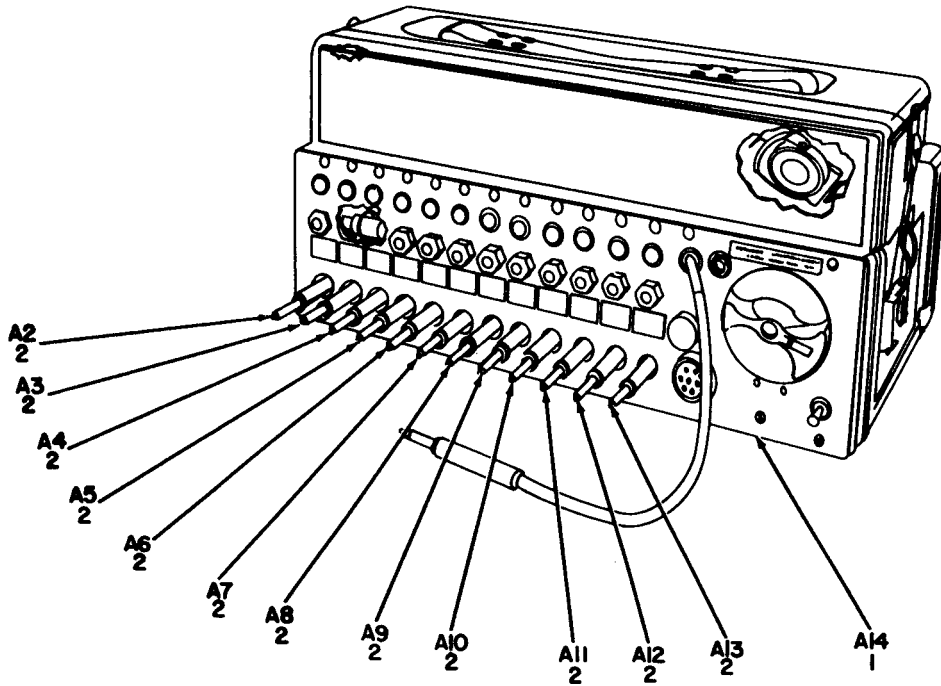
is in NIIN sequence, followed by a list of part numbers in alphameric sequence, cross-referenced to the illustration figure number and item number.

(2) Second. After finding the figure and item

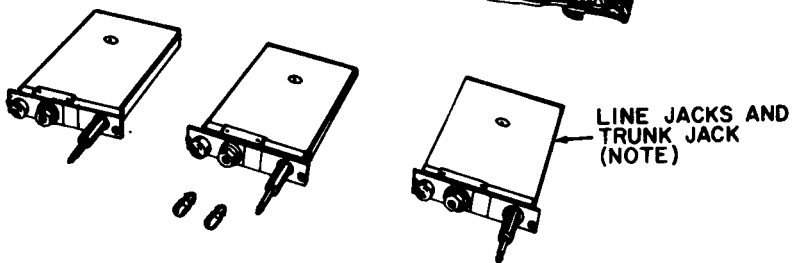
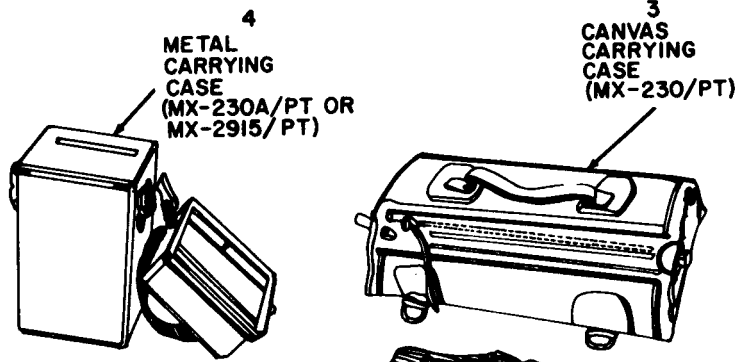
number, locate the figure and item number in the repair parts list.

## 6. Abbreviations

(Not applicable.)



**SWITCH BOARD**



**ACCESSORY KIT**

**NOTE:MX-230/PT AND MX-230A/PT EQUIPPED WITH THREE LINE JACKS.  
MX-2915/PT EQUIPPED WITH TWO LINE JACKS  
AND ONE TRUNK JACK.**

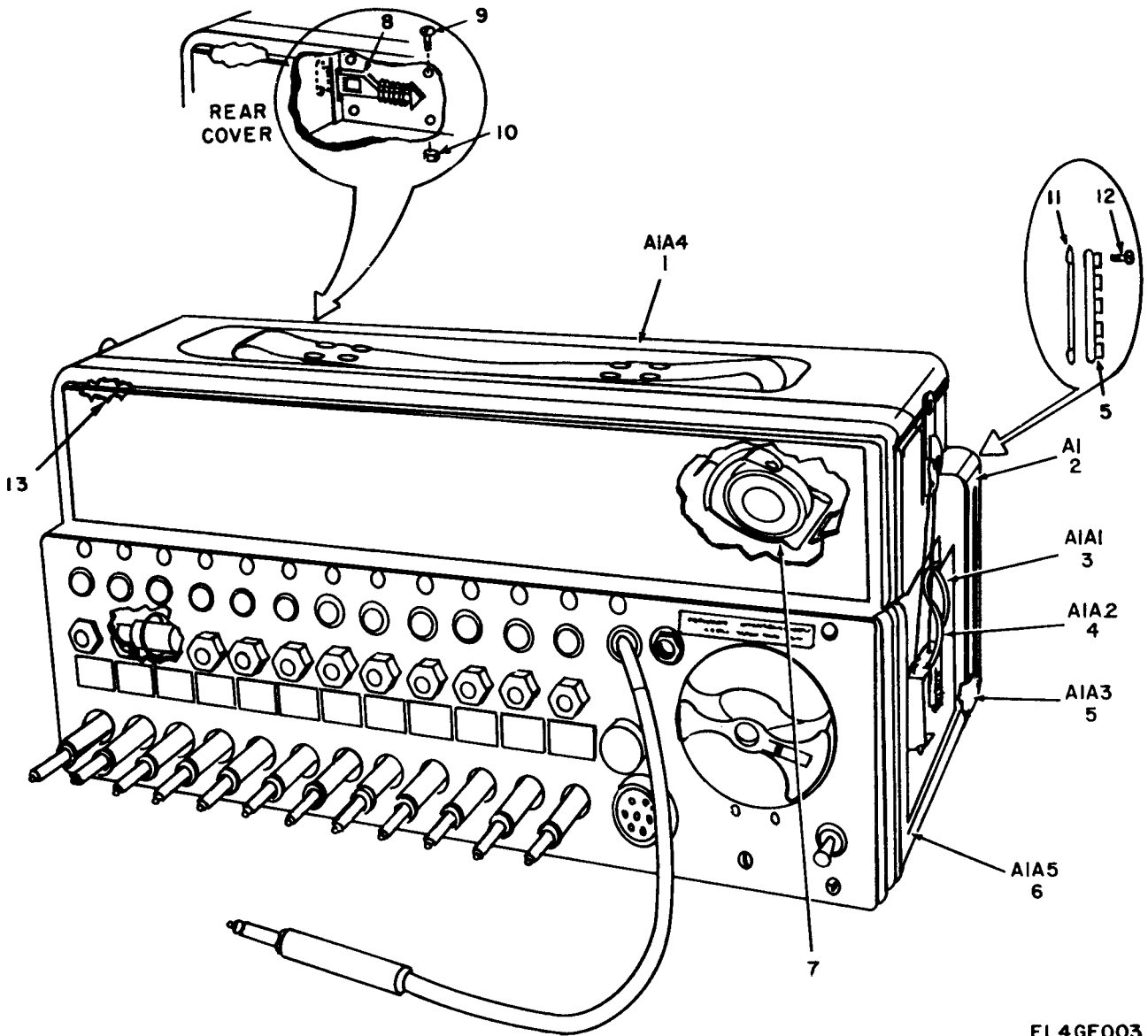
EL4GE001

Figure 1. Switchboards, Telephone, Manual SB-22/PT and SB-22A/PT.



SECTION II

(1)	(2)	(3)	(4)	(5)	(6)		(7)	(8)
ILLUSTRATION								
(a)	(b)	NATIONAL			DESCRIPTION			QTY
FIG	ITEM	STOCK	PART	FSCM		USABLE ON CODE	U\M	INC
NO.	NO.	NUMBER	NUMBER					IN
								UNIT
					GROUP 00 SWITCHBOARDS, TELEPHONE, MANUAL	SB-22/PT		
					AND SB-22A/PT			
1	1	PACFF	5805-00-503-3341	TA221PT	80058	TELEPHONE CIRCUIT, OPR	EA	1
1	2	PACFF	5805-00-503-3337	TA222PT	80058	TELEPHONE CIRCUIT, L JK	EA	12
1	3	PACFF	5805-00-356-2693	MX230PT	80058	SWITCHBOARD ACCESSORY KIT 5I2	EA	1
1	4	PACFF	5805-00-356-2693	MX230APT	80058	SWITCHBOARD ACCESSORY KIT 5I2	EA	1
1	4	PACFF	5805-00-715-6170	MX2915PT	80058	SWITCHBOARD ACCESSORY KIT ABK	EA	1

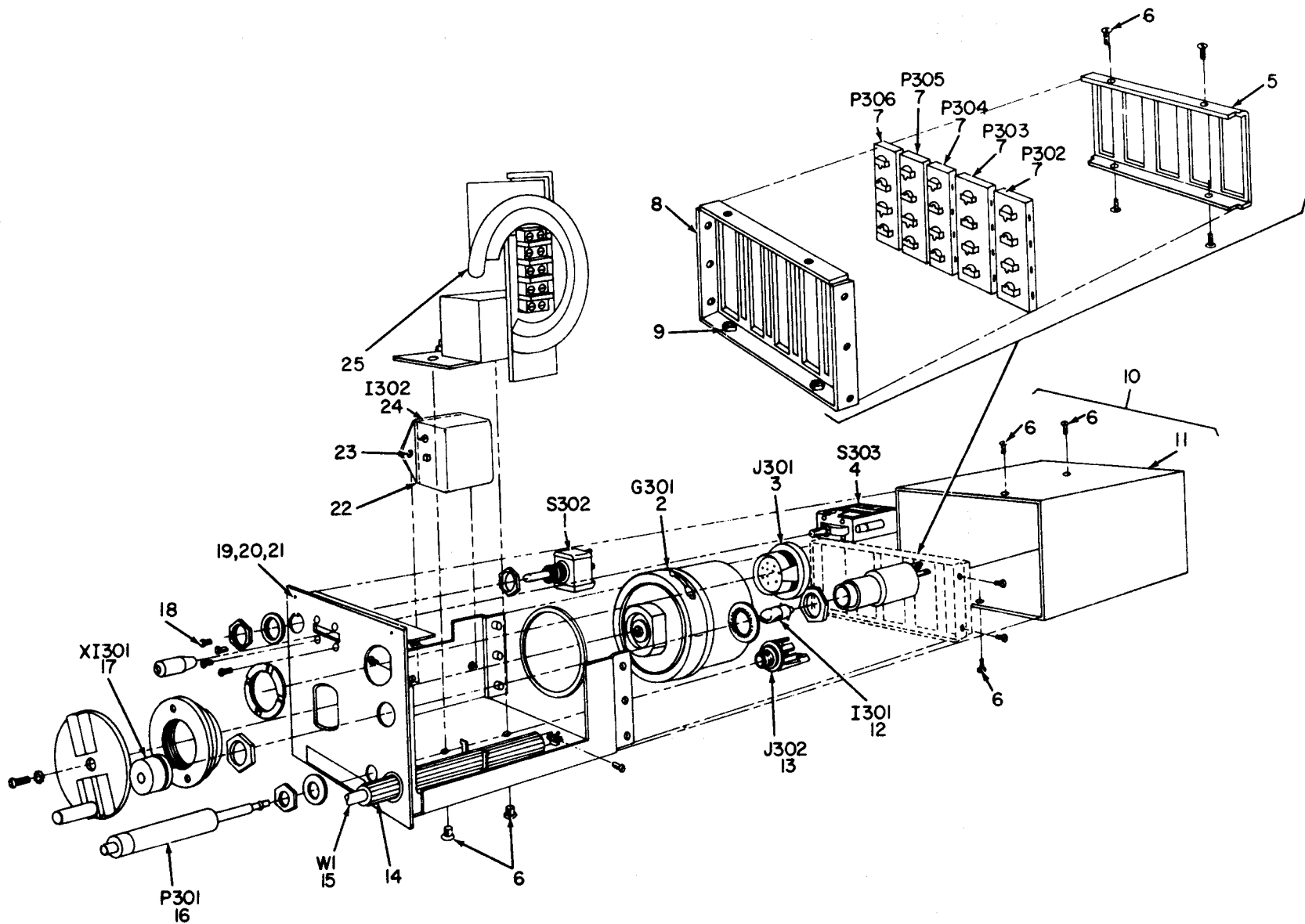


EL4GE003

Figure 2. Switchboards, Telephone, Manual SB-22/PT and SB-22A/PT, Front Panel View.

## SECTION II

(1)	(2)	(3)	(4)	(5)	(6)	(7)	(8)	
ILLUSTRATION								
(a)	(b)	NATIONAL			DESCRIPTION		QTY	
FIG	ITEM	STOCK	PART	FSCM		USABLE ON CODE	INC	
NO.	NO.	NUMBER	NUMBER				IN	
							UNIT	
2	1	PAFZZ	5805-00-356-3576	SCB84395	80063	COVER ASSEMBLY	EA	1
2	2	XDFFD		SMD361814	80063	CASE ASSEMBLY	EA	1
2	3	PAFZZ	5895-00-659-7783	SCC84365	80063	LATCH CABLE ASSEMBLY	EA	2
2	4	PAFZZ	5805-00-356-3579	SCB84371	80063	HANDLE ASSEMBLY	EA	2
2	5	XDFZZ		SCB84389	80063	PLATE ASSEMBLY	EA	2
2	6	PAOZZ	6135-00-635-5223	SCB84406	80063	CASE ASSEMBLY	EA	1
2	7	PACFF	5965-00-682-2769	H144U	80058	HANDSET-HEADSET,H-144/U	EA	1
2	8	PAFZZ	5340-00-324-9411	SCC25265	80063	LATCH ASSEMBLY	EA	2
2	9	PAFZZ	5305-00-043-6803	MS35227-15	96906	SCREW,MACHINE	EA	8
2	10	PAFZZ	5310-00-088-0551	22NM-40	72962	NUT,SELF-LOCKING	EA	8
2	11	XDFZZ	5330-00-351-4188	SCB84388	80063	GASKET	EA	1
2	12	PAFZZ	5305-00-958-5457	MS35190-226	96906	SCREW,MACHINE	EA	12
2	13	PAFZZ	5999-00-643-7687	SCB84384	80063	CLIP,ELECTRICAL	EA	4



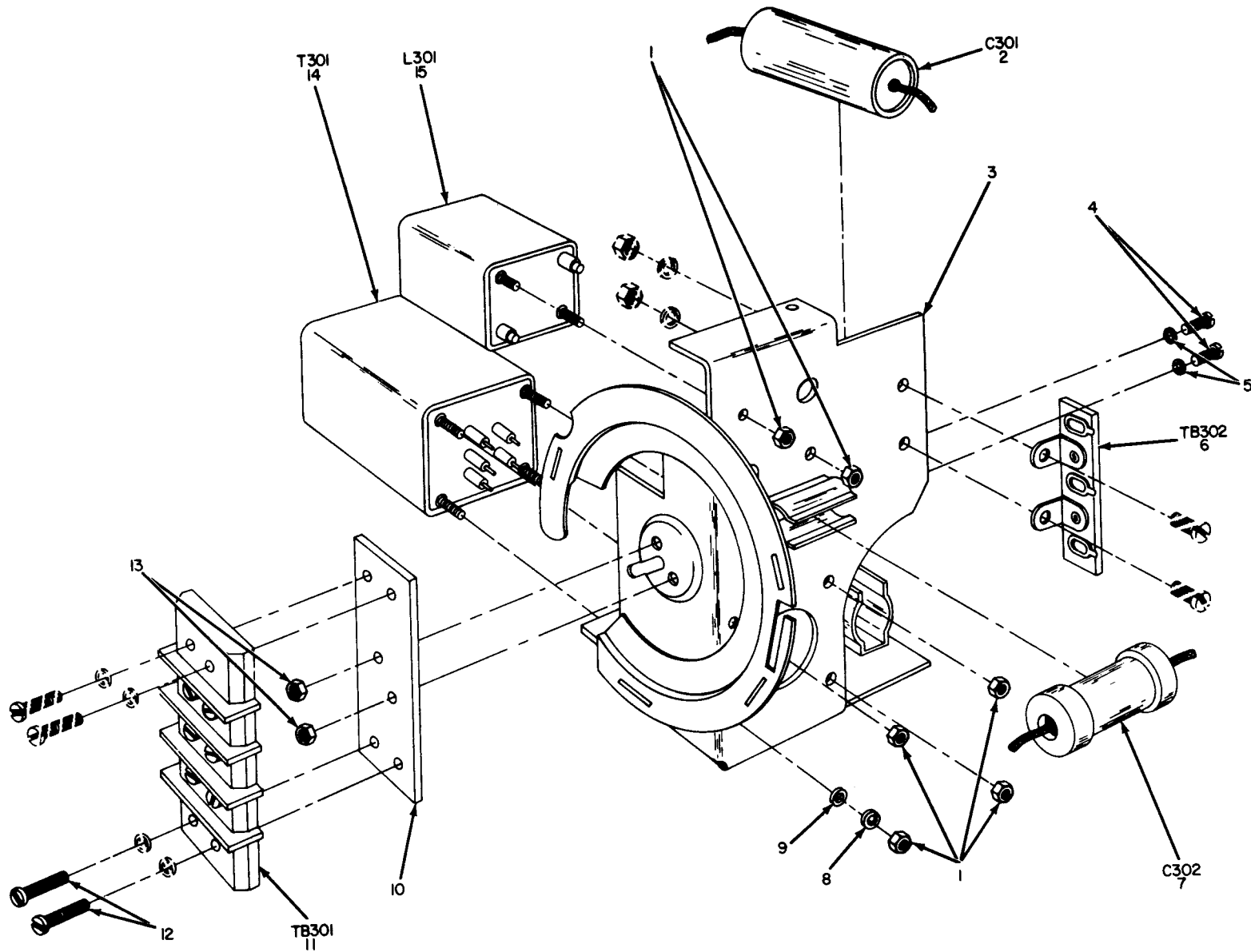
NOTE:  
FOR COMPLETE REFERENCE DESIGNATION PREFIX WITH A14.

Figure 3. Telephone Circuit, Operators TA-221/PT.

EL4GE004

SECTION II

(1) ILLUSTRATION (a) FIG NO.	(b) ITEM NO.	(2) SMR CODE	(3) NATIONAL STOCK NUMBER	(4) PART NUMBER	(5) FSCM	(6) DESCRIPTION	(7) USABLE ON CODE	(8) QTY INC IN UNIT
GROUP 01 TELEPHONE CIRCUIT OPERATORS TA-221/PT								
3	1	PAFZZ	5930-00-655-1513	MS35058-21	96906	SWITCH, TOGGLE	EA	1
3	2	PAFZZ	5805-00-542-1469	G42A/PT	80058	GENERATOR, RNGG, HAND	EA	1
3	3	PAFZZ	5935-00-549-2646	U79U	80063	CONNECTOR, RCPT	EA	1
3	4	XDFZZ		SMC361818	80063	SWITCH, LEVER	EA	1
3	5	XDFZZ		SCB84618	80063	FRAME, RCPT	EA	1
3	6	PAFZZ	5305-00-011-7646	MS35245-20	96906	SCREW, MACHINE	EA	17
3	7	PAFZZ	5935-00-786-1602	SCB84538GRP11	80063	CONNECTOR, RCPT	EA	5
3	8	XDFZZ		SCB84616	80063	FRAME ASSEMBLY	EA	1
3	9	XDFZZ		SMD361821-11	80063	NUT, SELF LOCKING	EA	2
3	10	XDFZZ		SCC84612	80063	CASE ASSEMBLY	EA	1
3	11	XDFZZ		SCC84619	80063	COVER, CASE	EA	1
3	12	PAOZZ	6240-00-196-4501	1490	24446	LAMP, INCANDESCENT	EA	1
3	13	PAFZZ	5935-00-192-4789	JJ089	81349	JACK, TELEPHONE	EA	1
3	14	PAFZZ	5325-00-835-2185	Z3126	76385	GROMMET, RUBBER	EA	1
3	15	PAFZZ	6625-00-244-8514	SCC27394	80063	CORD ASSEMBLY, ELEC	EA	1
3	16	PAFZZ	5935-00-192-4762	PJ051B	81349	PLUG, TELEPHONE	EA	1
3	17	PAOZZ	6210-00-548-0202	TCS61594-81XP10	72619	LIGHT, INDICATOR	EA	1
3	18	XDFZZ		SMD361821-7	80063	SCREW, MACHINE	EA	4
3	19	PAFZZ	5305-00-546-6866	SCB14093	80063	SCREW, EXT, RLV	EA	4
3	20	PAFZZ	5310-00-579-0079	MS35333-37	96906	WASHER, LOCK	EA	4
3	21	PAFZZ	5340-00-282-0808	SMB84461	80063	RING, RETAINER	EA	4
3	22	XDFZZ		SCB84620	80063	INSULATOR, PLATE	EA	1
3	23	XDFZZ		SCB84621	80063	BUSHING, SLEEVE	EA	2
3	24	PAFZZ	6350-00-351-8022	101	19557	BUZZER	EA	1
3	25	XDFFF		SCC84579	80063	BRACKET ASSEMBLY	EA	1



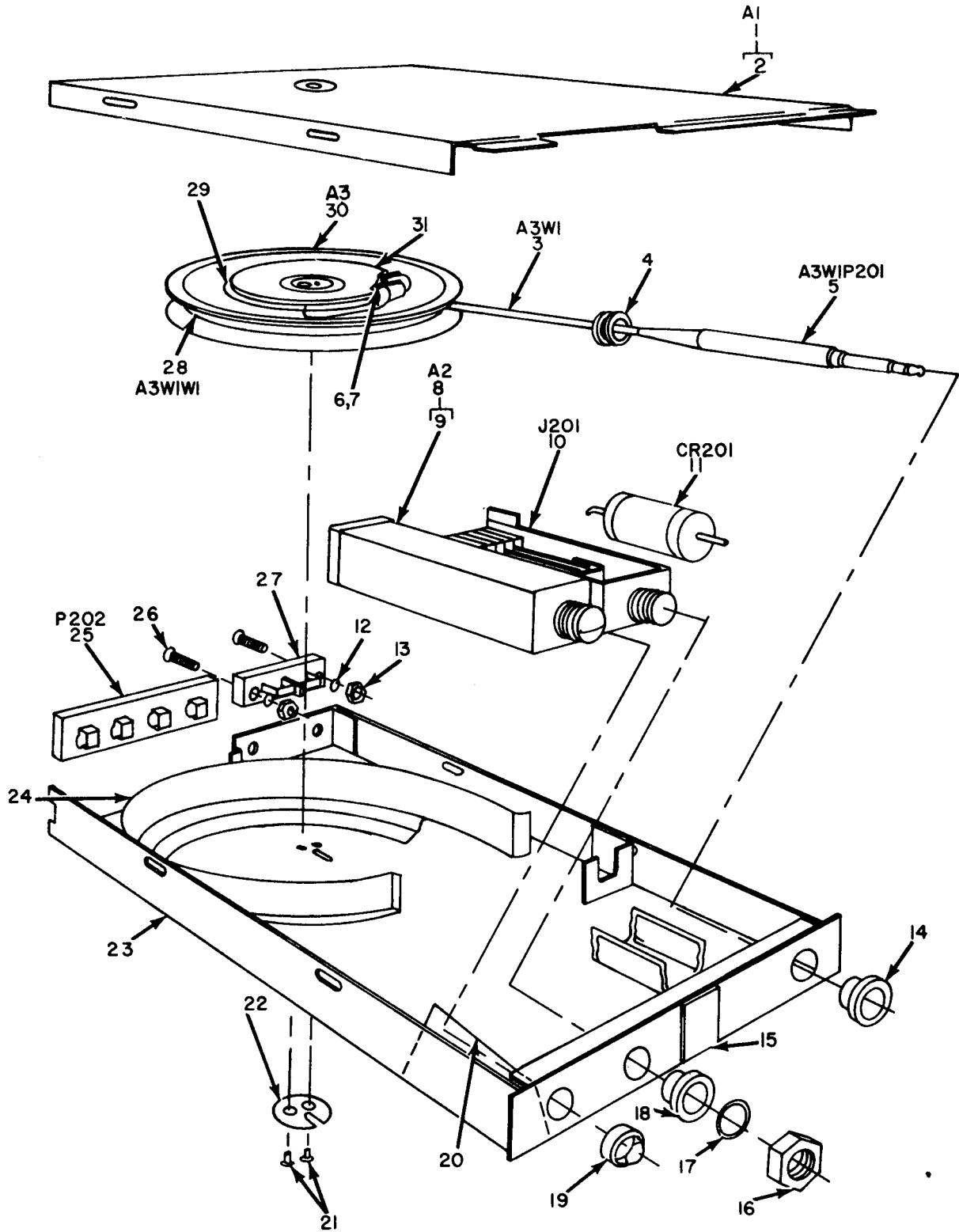
NOTE:  
 FOR COMPLETE REFERENCE DESIGNATION  
 PREFIX WITH A14A1.

EL4GE005

Figure 4. Telephone Circuit, Operators TA-221/PT. Bracket Assembly.

## SECTION II

(1) ILLUSTRATION (a) FIG NO.	(2) ITEM NO.	(3) SMR CODE	(4) NATIONAL STOCK NUMBER	(5) PART NUMBER	(6) FSCM	(7) DESCRIPTION USABLE ON CODE	(8) QTY INC IN UNIT
4	1	XDFZZ		96TM-62	80063	NUT, SLF-LKG	EA 6
4	2	PAFZZ	5910-00-280-6975	191F56492S4	56289	CAPACITOR, FXD, P	EA 1
4	3	XDFZZ		SCB84580	80063	BRACKET, MTG	EA 1
4	4	PAFZZ	5305-00-550-9330	MS35229-13	96906	SCREW, MACHINE	EA 2
4	5	PAFZZ	5310-00-579-0079	MS35333-37	96906	WASHER, LOCK	EA 2
4	6	XDFZZ		353-17-03-001	78189	TERMINAL BOARD	EA 1
4	7	PAFZZ	5910-00-666-7035	29F407G2	24446	CAPACITOR, TANTA	EA 1
4	8	XDFZZ	5310-00-595-7235	MS35333-20	96906	WASHER, LOCK	EA 4
4	9	XDFZZ	5310-00-983-8483	MS15795-5	96906	WASHER, FLAT	EA 4
4	10	XDFZZ		SMB108453	80063	INSULATOR, PLATE	EA 1
4	11	XDFZZ		332-11-05-055	78189	TERMINAL BOARD	EA 1
4	12	PAFZZ	5305-00-550-9326	MS35229-17	96906	SCREW, MACHINE	EA 4
4	13	PAFZZ	5310-00-616-3092	MS35649-45	96906	NUT, PLAIN, HEXAGON	EA 2
4	14	PAFZZ	5950-00-645-4465	SCC84598	80063	TRANSFORMER, AF	EA 1
4	15	PAFZZ	5950-00-351-5484	SCC84585	80063	COIL, TEL RTD	EA 1



NOTE: FOR COMPLETE REFERENCE DESIGNATION  
 PREFIX WITH A2 THRU A13, A15A2, A15A3.

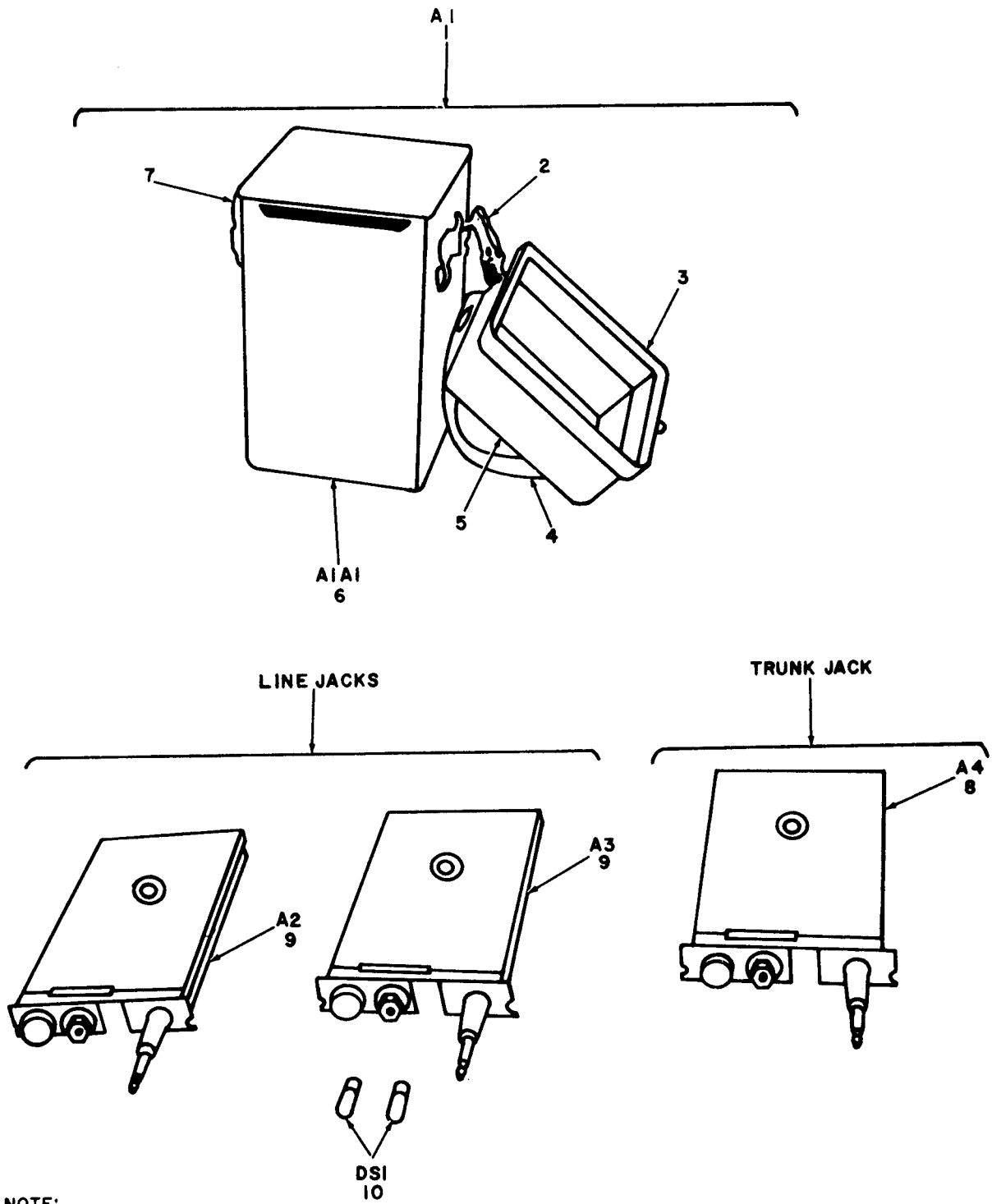
EL 4GE006

Figure 5. Telephone Circuit, Line Jack TA-222/PT.



SECTION II

(1) ILLUSTRATION (a) FIG NO.	(2) (b) ITEM NO.	(3) SMR CODE	(4) NATIONAL STOCK NUMBER	(5) PART NUMBER	(6) FSCM	DESCRIPTION	USABLE ON CODE	(7) U/M	(8) QTY INC IN UNIT
GROUP 02 TELEPHONE CIRCUIT, LINE JACK TA-222/PT									
5	1	XDFFF		SCC84430	80063	COVER ASSEMBLY		EA	1
5	2	XDFZZ		SCC84431	80063	COVER		EA	1
5	3	PAFFF	5995-00-752-2392	SCC35755	80063	CORD ASSEMBLY, ELEC		EA	1
5	4	XDFZZ		SMB361801	80063	STOP, PLUG		EA	1
5	5	PAFZZ	5935-00-837-5969	PJ051R	81349	PLUG, TELEPHONE		EA	1
5	6	XDFZZ		MS35229-8	96906	SCREW, MACHINE		EA	3
5	7	PAFZZ	5310-00-208-5335	MS35649-25	96906	NUT, PLAIN, HEXAGON		EA	3
5	8	PAFFF	5805-00-503-3332	SMD84439	80063	SIGNAL ASSEMBLY		EA	1
5	9	XDFZZ		SCB84445	80063	HOUSING ASSEMBLY		EA	1
5	10	PAFZZ	5935-00-258-8940	SCC84478	80063	JACK, TELEPHONE		EA	1
5	11	PAFZZ	5916-00-577-6214	1N538	81349	SEMICONDUCTOR, D		EA	1
5	12	XDFZZ		MS35333-87	96906	WASHER, LOCK		EA	4
5	13	PAFZZ	5310-00-616-3092	MS35649-45	96906	NUT, PLAIN, HEXAGON		EA	2
5	14	PAFZZ	5325-00-837-3648	SMB361802	80063	BUSHING, PANEL		EA	1
5	15	PAFZZ	9905-00-639-1679	SCB84438	80063	STRIP, DESIGNATION		EA	1
5	16	XDFZZ		SCB84505	80063	NUT, PLAIN, HEXAGON		EA	1
5	17	XDFZZ		SCB84485	80063	WASHER, FLAT		EA	1
5	18	PAFZZ	5970-00-796-1264	SCB84480	80063	BUSHING, SLEEVE		EA	1
5	19	PAFZZ	6210-00-284-0389	SCB84440	80063	WINDOW ASSEMBLY		EA	1
5	20	XDFZZ		SCB84432	80063	INSULATION, TAPE		EA	2
5	21	PAFZZ	5305-00-616-8592	MS35239-19	96906	SCREW, MACHINE		EA	2
5	22	XDFZZ		SCB84518	80063	SPACER		EA	2
5	23	XDFZZ		SMC84433	80063	CASE ASSEMBLY		EA	1
5	24	XDFZZ		SCB140981	80063	SHIELD, REEL		EA	1
5	25	PAFZZ	5935-00-636-5784	SCB84539GRP1	80063	CONNECTOR		EA	1
5	26	PAFZZ	5305-00-011-7648	MS35245-24	96906	SCREW, MACHINE		EA	2
5	27	PAFFF	5920-00-285-0188	SMB84543	81349	LIGHTING ARRESTOR ASSEMBLY		EA	1
5	28	PAFFF	5995-00-607-0367	SCC35756	80063	CORD ASSEMBLY ELECTRIC		EA	1
5	29	XDFZZ		SMD84512	80063	RETAINER SPRING		EA	2
5	30	PAFFF	5805-00-607-0357	SCD35754	80063	REEL AND PLUG ASSEMBLY		EA	1
5	31	PAFZZ	5805-00-392-7946	SMD84511	80063	REEL, CABLE		EA	1

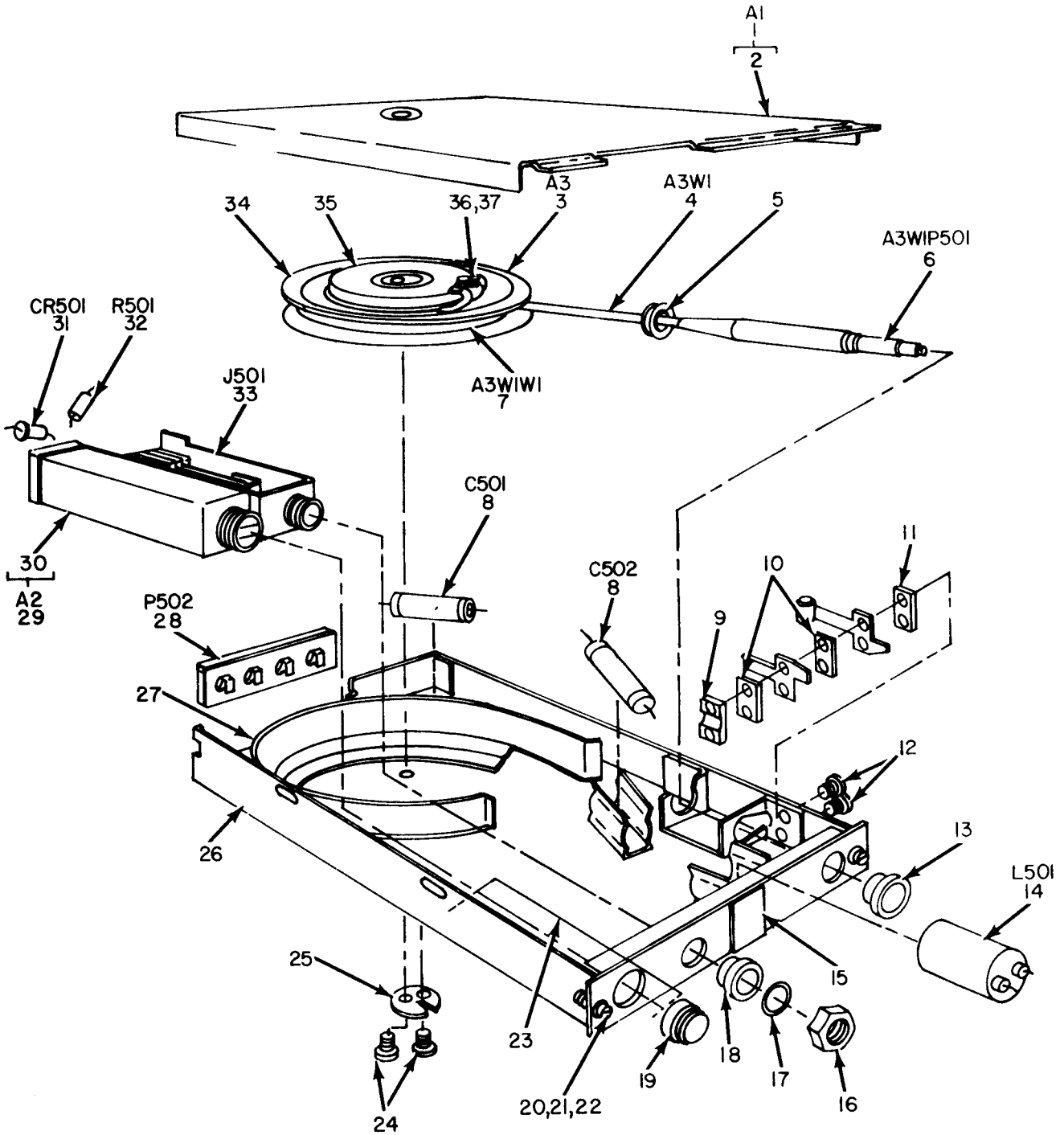


EL4GE007

Figure 6. Accessory Kit, MX-2915/PT, A Model Only.

SECTION II

(1)	(2)	(3)	(4)	(5)	(6)	(7)	(8)
ILLUSTRATION							
(a)	(b)	NATIONAL			DESCRIPTION		QTY
FIG	ITEM	STOCK	PART				INC
NO.	NO.	CODE	NUMBER	NUMBER	FSCM	USABLE ON CODE	U\M
							UNIT
GROUP 04 ACCESSORY KIT MX-2915/PT (A MODEL ONLY)							
6	1	PAFFF	5805-00-392-8058	SCD147778	80063	CASE ASSEMBLY ABK	EA 1
6	2	PAFZZ	5340-00-205-5159	SCD20648	80063	CATCH,LUGGAGE ABK	EA 2
6	3	PAFZZ	5805-00-523-9045	SCB142210	80063	GASKET ABK	EA 1
6	4	PAFZZ	8305-00-263-2462	SCD147778-1	80063	WEBBING,TEXTILE ABK	IN 12
6	5	XDFZZ		SCC142220	80063	COVER ASSEMBLY ABK	EA 1
6	6	PACFF	5805-00-799-3225	SCD142211	80063	CASE ASSEMBLY ABK	EA 1
6	7	PAFZZ	5935-00-323-5995	SCB142216	80063	STUD ABK	EA 5
6	8	PACFF	5805-00-715-6175	TA326PT	80058	TRUNK JACK ABK	EA 1
6	9	PACFF	5805-00-503-3337	TA222PT	80058	TELEPHONE CIRCUIT L JK ABK	EA 2
6	10	PAOZZ	6240-00-196-4501	1490	24446	LAMP,INCANDESCENT ABK	EA 2



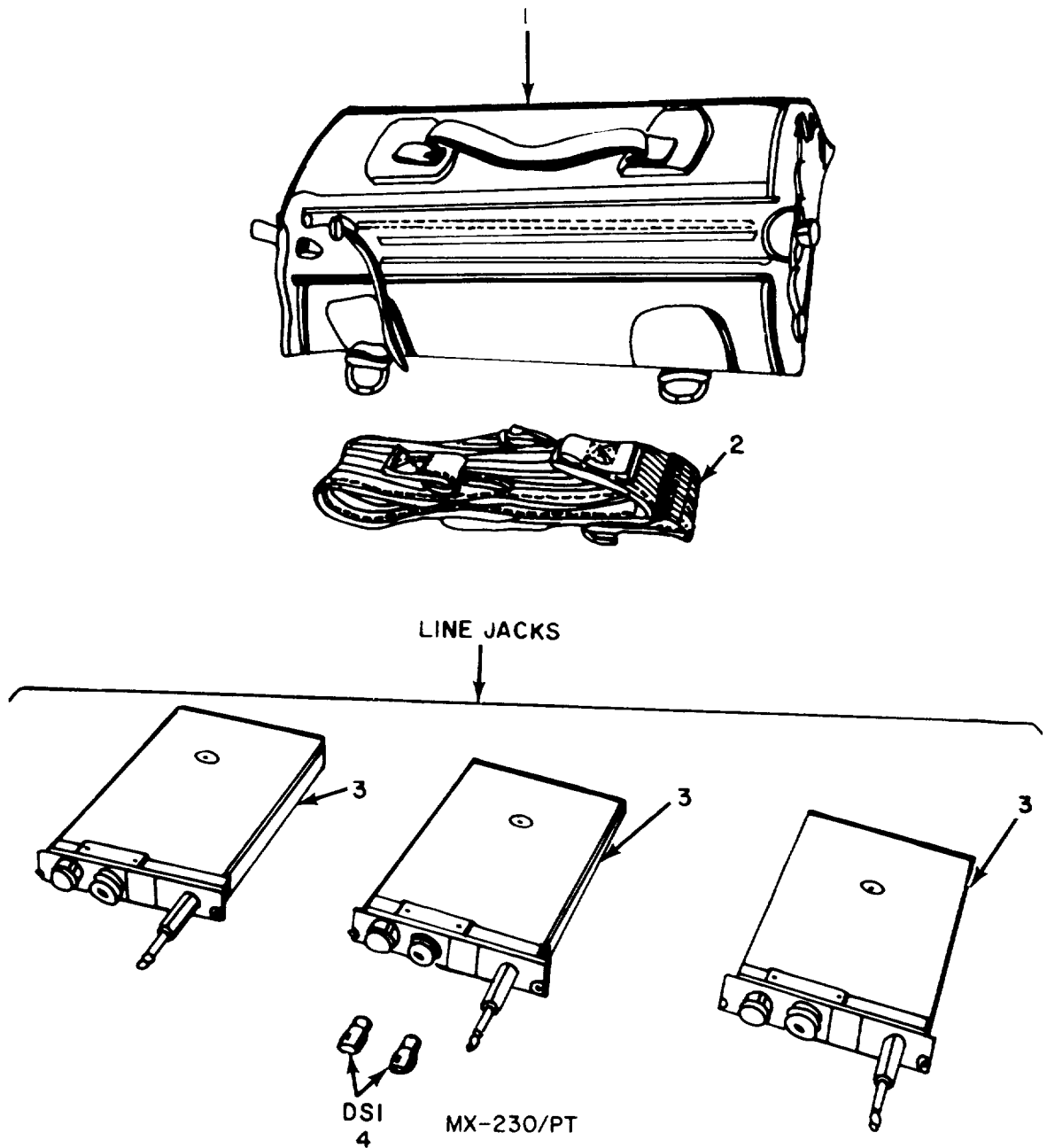
NOTE:  
FOR COMPLETE REFERENCE DESIGNATION  
PREFIX WITH A15A4.

EL4GE008

Figure 7. Telephone Circuit, Trunk Jack TA-326/PT.

SECTION II		(2)	(3)	(4)	(5)	(6)	(7)	(8)
(1)	ILLUSTRATION							
(a)	(b)		NATIONAL	PART		DESCRIPTION		QTY
FIG	ITEM	SMR	STOCK	NUMBER	FSCM		USABLE ON CODE	INC
NO.	NO.	CODE	NUMBER	NUMBER				IN
								UNIT
						GROUP 0402 TELEPHONE CIRCUIT, TRUNK JACK TA-326/PT		
7	1	XDFFF		SCC84430	80063	COVER ASSEMBLY	ABK	EA 1
7	2	XDFZZ		SCC84431	80063	COVER	ABK	EA 1
7	3	PAFZZ	5805-00-607-0357	SCD35754	80063	REEL AND PLUG ASSEMBLY	ABK	EA 1
7	4	PAFFF	6240-00-196-4501	SCC35755	80063	CARD ASSEMBLY, ELEC	ABK	EA 1
7	5	XDFZZ		SMB361801	80063	STOP, PLUG	ABK	EA 1
7	6	PAFZZ	5935-00-837-5969	PJ051R	81349	PLUG, TELEPHONE	ABK	EA 1
7	7	PAFFF	5955-00-607-0367	SCC35756	80063	CORD ASSEMBLY, ELEC	ABK	EA 1
7	8	PAFZZ	5910-00-666-7035	29G407A	24446	CAPACITOR, TANTA	ABK	EA 2
7	9	XDFZZ		SCB33707	80063	CLAMP	ABK	EA 1
7	10	XDFZZ		SB33705-2	80063	INSULATOR, PLATE	ABK	EA 2
7	11	XDFZZ		SCB33705-1	80063	INSULATOR, PLATE	ABK	EA 1
7	12	PAFZZ	5305-00-022-6756	MS35201-11	96906	SCREW, MACHINE	ABK	EA 2
7	13	PAFZZ	5325-00-837-3648	SMB361802	80063	BUSHING, PANEL	ABK	EA 1
7	14	PAFZZ	5950-00-811-1787	SCB33708	80063	REACTOR	ABK	EA 1
7	15	PAFZZ	9905-00-639-1679	SCB84438	80063	STRIP, DESIGNATION	ABK	EA 1
7	16	XDFZZ		SCB84505	80063	NUT, PLAIN, HEXAGON	ABK	EA 1
7	17	XDFZZ		SCB84485	80063	WASHER, FLAT	ABK	EA 1
7	18	PAFZZ	5970-00-796-1264	SCB84480	80063	BUSHING, SLEEVE	ABK	EA 1
7	19	PAFZZ	6210-00-284-0389	SCB84440	80063	WINDOW ASSEMBLY	ABK	EA 1
7	20	PAFZZ	5305-00-546-6866	SCB14093	80063	SCREW, EXT RLV	ABK	EA 2
7	21	PAFZZ	5340-00-282-0808	SCB84461	80063	RING, RETAINER	ABK	EA 2
7	22	PAFZZ	5310-00-261-7156	MS35333-78	96906	WASHER, LOCK	ABK	EA 2
7	23	XDFZZ		SCB84432	80063	INSULATION TAPE	ABK	EA 2
7	24	PAFZZ	5305-00-616-8592	MS35239-19	96906	SCREW, MACHINE	ABK	EA 2
7	25	XDFZZ		SCB84518	80063	SPACER	ABK	EA 2
7	26	XDFZZ		SCC33709	80063	CASE ASSEMBLY	ABK	EA 1
7	27	XDFZZ		SCB140981	80063	SHIELD, REEL	ABK	EA 1
7	28	PAFZZ	5935-00-636-5784	SCB84538	80063	CONNECTOR, RCPT	ABK	EA 1
7	29	PAFFF	5805-00-503-3332	SMD84439	80063	SIGNAL ASSEMBLY	ABK	EA 1
7	30	XDFZZ		SCB84445	80063	HOUSING ASSEMBLY	ABK	EA 1
7	31	PAFZZ	5960-00-816-4735	PT520	70779	SEMICONDUCTOR, DIODE	ABK	EA 1
7	32	PAFZZ	5905-00-942-9326	RC20GF561K	81349	RESISTOR, FXD, CM	ABK	EA 1
7	33	PAFFF	5935-00-810-9450	SCC33721	80063	JACK, TELEPHONE	ABK	EA 1
7	34	PAFZZ	5805-00-392-7946	SMD84511	80063	REEL, CABLE	ABK	EA 1
7	35	XDFZZ		SMD84512	80063	RETAINING SPRING	ABK	EA 2
7	36	XDFZZ		MS35229-8	96906	SCREW, MACHINE	ABK	EA 3
7	37	PAFZZ	5310-00-208-5335	MS35649-25	96906	NUT, PLAIN, HEXAGON	ABK	EA 3





NOTE:  
FOR COMPLETE REFERENCE DESIGNATION  
PREFIX WITH A15.

EL4GE009

Figure 8. Accessory Kit, MX-230/PT and MX-230A/PT (Sheet 1 of 2).

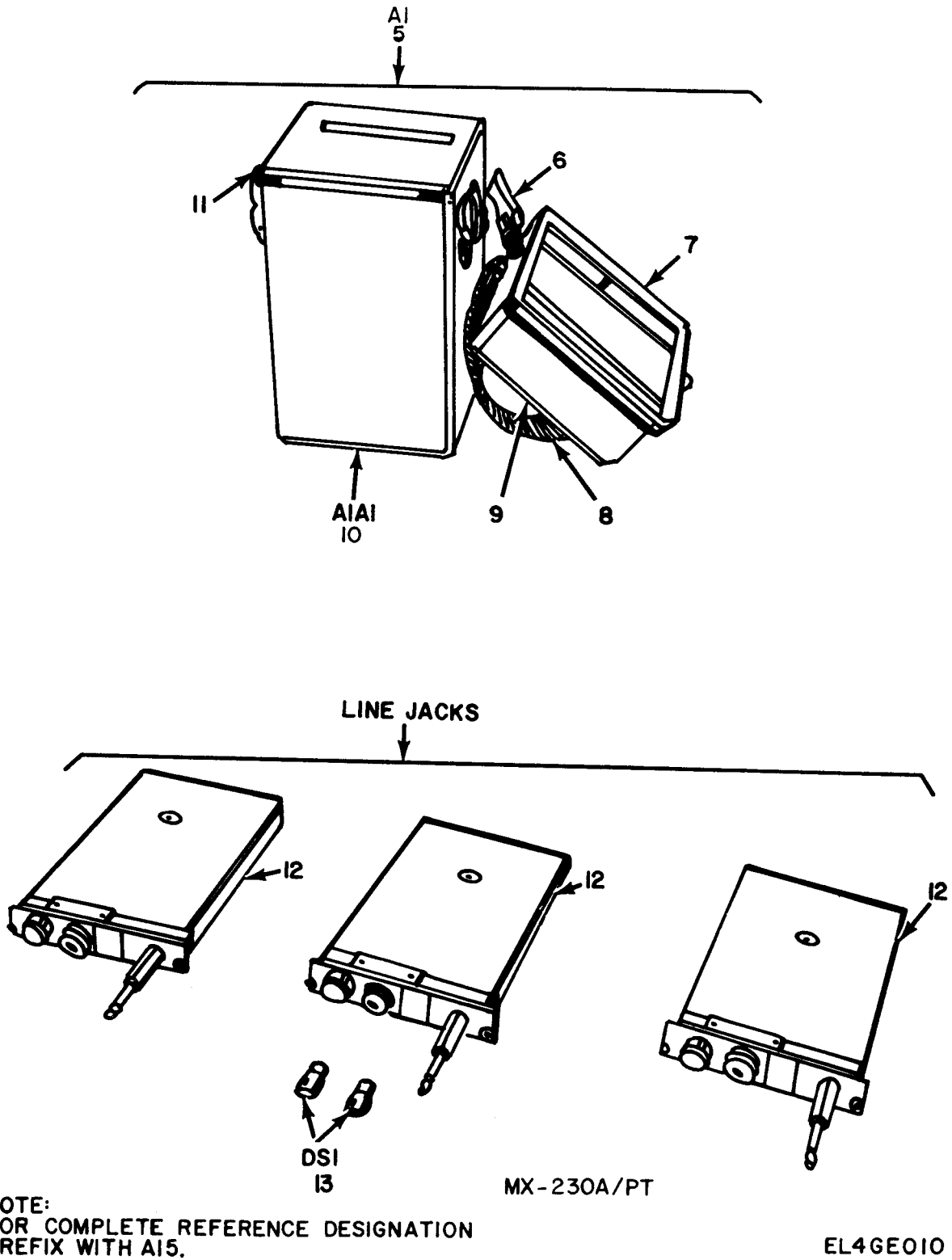


Figure 8. Accessory Kit, MX-230/PT and MX-230A/PT (Sheet 2 of 2).



SECTION II											
(1)	(2)	(3)	(4)	(5)	(6)			(7)	(8)		
ILLUSTRATION						DESCRIPTION			QTY	INC	
(a)	(b)	NATIONAL	PART						IN		
FIG	ITEM	STOCK	NUMBER	FSCM			USABLE ON CODE	U\M	UNIT		
NO.	NO.	CODE	NUMBER								
GROUP 05 ACCESSORY KIT MX-230/PT AND MX-230A/PT											
(PLAIN MODEL ONLY)											
8	1	PACFF	5805-00-392-8058	BA31062	28528	CASE,CANVAS	5I2	EA	1		
8	2	PACFF	5805-00-313-3548	SCD147777-3	80063	SLING,CARRYING	5I2	EA	1		
8	3	PACFF	5805-00-503-3337	TA222PT	80058	TELEPHONE CIRCIT L JK	5I2	EA	3		
8	4	PAFZZ	6240-00-196-4501	1490	24446	LAMP,INCANDESCENT	5I2	EA	2		
8	5	PAFZZ	5805-00-392-8058	SCD147778	80063	CASE ASSEMBLY	5I2	EA	1		
8	6	PAFZZ	5340-00-205-5159	SCD20648	80063	CATCH,LUGGAGE	5I2	EA	2		
8	7	PAFZZ	5805-00-523-9045	SCB142210	80063	GASKET	5I2	EA	1		
8	8	PAFZZ	8305-00-263-2462	SCD147778-1	80063	WEBBING,TEXTILE	5I2	IN	12		
8	9	XDFZZ		SCC142220	80063	COVER ASSEMBLY	5I2	EA	1		
8	10	PACFF	5805-00-799-3225	SCD142211	80063	CASE ASSEMBLY	5I2	EA	1		
8	11	PAFZZ	5935-00-323-5995	SCB142216	80063	STUD	5I2	EA	5		
8	12	PACFF	5805-00-503-3337	TA222PT	80058	TELEPHONE CIRCUIT L JK	5I2	EA	3		
8	13	PAFZZ	6240-00-196-4501	1490	24446	LAMP,INCANDESCENT	5I2	EA	2		

## NATIONAL STOCK NUMBER AND PART NUMBER INDEX

NOTE: LATEST NATIONAL STOCK NUMBER AND PART NUMBER ASSIGNMENTS ARE INCLUDED AT END OF INDEX

STOCK NUMBER	FIGURE NO.	ITEM NO.	STOCK NUMBER	FIGURE NO.	ITEM NO.
5305-00-011-7646	3	6			
5305-00-011-7648	5	26	5305-00-546-6866	3	19
5305-00-022-6756	7	12	5305-00-546-6866	7	20
5935-00-192-4762	3	16	6210-00-548-0202	3	17
			5305-00-549-2646	3	3
6240-00-196-4501	3	12	5305-00-550-9326	4	12
6240-00-196-4501	6	10	5305-00-550-9330	4	4
6240-00-196-4501	7	4			
6240-00-196-4501	8	4			
6240-00-196-4501	8	13	5916-00-577-6214	5	11
5310-00-208-5335	5	7	5310-00-579-0079	3	20
5310-00-208-5335	7	37	5310-00-579-0079	4	5
6625-00-244-8514	3	15	5310-00-595-7235	4	8
5935-00-258-8940	5	10	5805-00-607-0357	7	3
5305-00-263-2462	6	4	5995-00-607-0367	5	28
8305-00-263-2462	8	8	5995-00-607-0367	7	7
5910-00-280-6975	4	2	5310-00-616-3092	4	13
5340-00-282-0808	3	21	5303-00-616-3092	5	13
5340-00-282-0808	7	21	5303-00-616-8592	5	21
6210-00-282-0389	5	19	5305-00-616-8592	7	24
6210-00-284-0389	7	19	6135-00-635-5223	2	6
5920-00-285-0188	5	27	5935-00-636-5784	5	25
5805-00-313-3548	8	2	5935-00-636-5784	7	28
5935-00-323-5995	6	7	9905-00-639-1679	5	15
5935-00-323-5995	8	11	5950-00-645-4465	4	14
5950-00-351-5484	4	15	5930-00-655-1513	3	1
6350-00-351-8022	3	24	5985-00-659-7783	2	3
5805-00-356-2693	1	3	5910-00-666-7035	4	7
5805-00-356-2693	1	4	5910-00-666-7035	7	8
5805-00-356-3576	2	1	5965-00-682-2769	3	26
5805-00-356-3579	2	4	5805-00-715-6170	1	4
5805-00-392-7946	5	31	5805-00-715-6175	6	8
5805-00-392-7946	7	34			
			5995-00-752-2392	5	3
5805-00-392-8058	6	1	5935-00-786-1602	3	7
5805-00-392-8058	8	1	5970-00-796-1264	5	18
5805-00-392-8058	8	5	5970-00-796-1264	7	18
			5935-00-810-9450	7	33
			5950-00-811-1787	7	14
			5960-00-816-4735	7	31
			5325-00-835-2185	3	14
5805-00-503-3337	1	2	5325-00-837-3648	5	14
5805-00-503-3337	6	9	5325-00-837-3648	7	13
5805-00-503-3337	8	3			
5805-00-503-3337	8	12			
5805-00-503-3341	1	1	5310-00-983-8483	4	9
5805-00-503-9045	6	3			
5805-00-523-9045	8	7			

PART NUMBER	FSCM	FIG. NO.	ITEM NO.	PART NUMBER	FSCM	FIG. NO.	ITEM NO.
BA31062	28528	8	1	PT520	70779	7	31
				RC20GF561K	81349	7	32
H144U	80058	2	7	SCB14093	80063	3	19
				SCB14093	80063	7	20
JJ089	81349	3	13	SCB140981	80063	5	24
MS15795-5	96906	4	9	SCB140981	80063	7	27
MS35058-21	96906	3	1	SCB142210	80063	6	3
MS35201-11	96906	7	12	SCB142210	80063	8	7
MS35229-13	96906	4	4	SCB142216	80063	6	7
MS35229-17	96906	4	12	SCB142216	80063	8	11
MS35229-8	96906	5	6	SCB33705-1	80063	7	11
MS35229-8	96906	7	36	SCB33705-2	80063	7	10
MS35239-19	96906	5	21	SCB33707	80063	7	9
MS35239-19	96906	7	24	SCB33708	80063	7	14
MS35245-20	96906	3	6	SCBB4371	80063	2	4
MS35245-24	96906	5	26	SCB84389	80063	2	5
MS35333-20	96906	4	8	SCB84395	80063	2	1
MS35333-37	96906	3	20	SCB84406	80063	2	6
MS35333-37	96906	4	5	SCB84431	80063	5	22
MS35333-87	96906	5	12	SCB84432	80063	5	20
				SCB84432	80063	7	23
MS35649-25	96906	5	7	SCB84438	80063	5	15
MS35649-25	96906	7	37	SCB84438	80063	7	15
MS35649-45	96906	4	13	SCB84439	80063	7	29
MS35649-45	96906	5	13	SCB84439	80063	5	8
MX230APT	80063	1	4	SCB84440	80063	5	19
MX230PT	80063	1	3	SCB84440	80063	7	19
MX2915PT	80063	1	5	SCB84445	80063	5	9
PJ051B	81349	3	16	SCB84445	80063	7	30
PJ051R	81349	5	5	SCB84461	80063	7	21
PJ051R	81349	7	6				

## SECTION IV

TM11-5805-262-34P

PART NUMBER	NATIONAL STOCK NUMBER AND PART NUMBER INDEX			PART NUMBER	FIG. ITEM		
	FSCM	FIG. NO.	ITEM NO.		FSCM	FIG. NO.	ITEM NO.
SCB84480	80063	5	18	SCD35754	80063	5	30
SCB84480	80063	7	18	SCD35754	80063	7	3
SCB84485	80063	5	17	SMB108453	80063	4	10
SCB84485	80063	7	17	SMB361801	80063	5	4
SCB84505	80063	5	16	SMB361801	80063	7	5
SCB84505	80063	7	16	SMB361802	80063	5	14
SCB84518	80063	5	22	SMB361802	80063	7	13
SCB84518	80063	7	25	SMB84461	80063	3	21
SCB84538	80063	7	28	SMB84543	81349	5	27
SCB84538GRP1	80063	5	25	SMC361818	80063	3	4
SCB84538GRP11	80063	3	7	SMC84433	80063	5	23
SCB84579	80063	3	25	SMD145951	80063	3	26
SCB84580	80063	4	3	SMD361814	80063	2	2
SCB84616	80063	3	8	SMD361821-11	80063	3	9
SCB84618	80063	3	5	SMD361821-7	80063	3	18
SCB84620	80063	3	22				
SCB84261	80063	3	23				
SCC142220	80063	8	9	SMD84439	80063	5	8
SCC27394	80063	3	15	SMD84511	80063	5	31
SCC33709	80063	7	26	SMD84511	80063	7	34
SCC33721	80063	7	33	SMD84512	80063	5	29
SCC35755	80063	5	3	SMD84512	80063	7	35
SCC35755	80063	7	4	TA221PT	80058	1	1
SCC35756	80063	7	7	TA222PT	80058	1	2
SCC35756	80063	5	28	TA222PT	80058	6	9
SCC84365	80063	2	3	TA326PT	80058	6	8
SCC84430	80063	7	1	TCS61594-81XP10	72619	3	17
SCC84431	80063	7	2	U79U	80063	3	3
SCC84478	80063	5	10	Z3126	76385	3	14
SCC84585	80063	4	15	1N538	81349	5	11
SCC84598	80063	4	14	101	19557	3	24
SCC84612	80063	3	10	1490	24446	3	12
SCC84619	80063	3	11	1490	24446	6	10
SCD142211	80063	8	10	1490	24446	8	4
SCD142211	80063	6	6	1490	24446	8	13
SCD14777-3	80063	8	2	191F56492SA	56289	4	2
SCD147778	80063	6	1	29F407G2	24446	4	7
SCD147778	80063	8	5	29G407A	24446	7	8
SCD147778-1	80063	6	4	332-11-05-055	78189	4	11
SCD147778-1	80063	8	8	353-17-03-001	78189	4	6
SCD20648	80063	6	2	96TM-62	80063	4	1
SCD20648	80063	8	6				

## LATEST NATIONAL STOCK NUMBER ASSIGNMENTS

STOCK NUMBER	FIGURE ITEM	
	NO.	NO.
5305-00-043-6803	2	9
5310-00-088-0551	2	10
5935-00-192-4789	3	13
5340-00-205-5159	6	2
5340-00-205-5159	8	6
5310-00-261-7156	7	22
5805-00-503-3332	5	8
5805-00-503-3332	7	29
5805-00-542-1469	3	2
5805-00-607-0357	5	30
9905-00-639-1679	7	15
5965-00-632-2769	2	7
5805-00-799-3225	6	6
5805-00-799-3225	8	10
5935-00-837-5969	5	5
5935-00-837-5969	7	6
5905-00-942-9326	7	32
5305-00-958-5457	2	12

## LATEST PART NUMBER ASSIGNMENTS

PART NUMBER	FIG. ITEM		
	FSCM	FIG. NO.	ITEM NO.
G42A/PT	80058	3	2
MS35190-226	96906	2	12
MS35227-15	96906	2	9
MS35333-78	96906	7	22
SCB84388	80063	2	11
SCC25265	80063	2	8
TA222PT	80058	8	3
TA222PT	80058	8	12
22NM-40	72962	2	10

NATIONAL STOCK NUMBER AND PART NUMBER INDEX  
ADDITIONAL LATEST STOCK NUMBER ASSIGNMENTS

STOCK NUMBER	FIGURE NO.	ITEM NO.
5340-00-324-9411	2	8
5330-00-351-4188	2	11
5999-00-643-7687	2	13

## ADDITIONAL LATEST PART NUMBER ASSIGNMENTS

PART NUMBER	FSCM	FIG. NO.	ITEM NO.
SCB84384	80063	2	13

RECOMMENDED CHANGES TO EQUIPMENT TECHNICAL MANUALS



**SOMETHING WRONG WITH THIS MANUAL?**

THEN... JOT DOWN THE DOPE ABOUT IT ON THIS FORM, TEAR IT OUT, FOLD IT AND DROP IT IN THE MAIL!

FROM: (YOUR UNIT'S COMPLETE ADDRESS)

Commander  
Stateside Army Depot  
ATTN: AMSTA-US  
Stateside, N.J. 07703

DATE 10 July 1975

PUBLICATION NUMBER

TM 11-5840-340-12

DATE

23 Jan 74

TITLE

Radar Set AN/SPC-76

BE EXACT... PIN-POINT WHERE IT IS

PAGE NO.	PARA-GRAPH	FIGURE NO.	TABLE NO.
2-25	2-28		
3-10	3-3		3-1
5-6	5-8		
		FO3	

IN THIS SPACE TELL WHAT IS WRONG AND WHAT SHOULD BE DONE ABOUT IT:

Recommend that the installation antenna alignment procedure be changed throughout to specify a 2° IFF antenna lag rather than 1°.

REASON: Experience has shown that with only a 1° lag, the antenna servo system is too sensitive to wind gusting in excess of 27 knots, and has a tendency to rapidly accelerate and decelerate as it hunts, causing strain to the drive train. Hunting is minimized by adjusting the lag to 2° without degradation of operation.

Item 5, Functions column. Change "2 db" to "3db."

REASON: The adjustment procedure for the TRANS POWER FAULT indicator calls for a 3 db (500 watts) adjustment to light the TRANS POWER FAULT indicator.

Add new step f.1 to read, "Replace cover plate removed in step e.1, above."

REASON: To replace the cover plate.

Zone C 3. On J1-2, change "+24 VDC to "+5 VDC."

REASON: This is the output line of the 5 VDC power supply. + 24 VDC is the input voltage.

TEAR ALONG DOTTED LINE

TYPED NAME, GRADE OR TITLE, AND TELEPHONE NUMBER

SSG I. M. DeSpirito 999-1776

SIGN HERE:

*SSG I. M. DeSpirito*

DA FORM 2028-2 (TEST)

P.S.--IF YOUR OUTFIT WANTS TO KNOW ABOUT YOUR MANUAL "FIND," MAKE A CARBON COPY OF THIS AND GIVE IT TO YOUR HEADQUARTERS.

HISA 1686-75



RECOMMENDED CHANGES TO EQUIPMENT TECHNICAL MANUALS



# SOMETHING WRONG WITH THIS MANUAL?

THEN... JOT DOWN THE DOPE ABOUT IT ON THIS FORM, TEAR IT OUT, FOLD IT AND DROP IT IN THE MAIL!

FROM: (YOUR UNIT'S COMPLETE ADDRESS)

DATE

PUBLICATION NUMBER

DATE

TITLE

TM 11-5805-262-34P

22 May 78

BE EXACT... PIN-POINT WHERE IT IS

IN THIS SPACE TELL WHAT IS WRONG AND WHAT SHOULD BE DONE ABOUT IT:

PAGE NO.

PARA-GRAPH

FIGURE NO.

TABLE NO.

TEAR ALONG DOTTED LINE

TYPED NAME, GRADE OR TITLE, AND TELEPHONE NUMBER

SIGN HERE:

DA FORM 2028-2 (TEST)  
1 AUG 74

P.S.--IF YOUR OUTFIT WANTS TO KNOW ABOUT YOUR MANUAL "FIND." MAKE A CARBON COPY OF THIS AND GIVE IT TO YOUR HEADQUARTERS.

FILL IN YOUR  
UNIT'S ADDRESS

FOLD BACK

DEPARTMENT OF THE ARMY

OFFICIAL BUSINESS

PENALTY FOR PRIVATE USE, \$300

Commander  
US Army Communications and  
Electronics Materiel Readiness Command  
ATTN: DRSEL-MA-Q  
Fort Monmouth, New Jersey 07703

FOLD BACK

TEAR ALONG DOTTED LINE





# SOMETHING WRONG WITH THIS MANUAL?

THEN... JOT DOWN THE DOPE ABOUT IT ON THIS FORM, TEAR IT OUT, FOLD IT AND DROP IT IN THE MAIL!

FROM: (YOUR UNIT'S COMPLETE ADDRESS)

DATE

PUBLICATION NUMBER

DATE

TITLE

TM 11-5805-262-34P

22 May 78

BE EXACT... PIN-POINT WHERE IT IS

IN THIS SPACE TELL WHAT IS WRONG AND WHAT SHOULD BE DONE ABOUT IT:

PAGE NO.

PARA-GRAPH

FIGURE NO.

TABLE NO.

TEAR ALONG DOTTED LINE

TYPED NAME, GRADE OR TITLE, AND TELEPHONE NUMBER

SIGN HERE:

FILL IN YOUR  
UNIT'S ADDRESS

FOLD BACK

DEPARTMENT OF THE ARMY

\_\_\_\_\_  
\_\_\_\_\_

OFFICIAL BUSINESS

PENALTY FOR PRIVATE USE, \$300

Commander  
US Army Communications and  
Electronics Materiel Readiness Command  
ATTN: DRSEL-MA-Q  
Fort Monmouth, New Jersey 07703

FOLD BACK

TEAR ALONG DOTTED LINE

RECOMMENDED CHANGES TO EQUIPMENT TECHNICAL MANUALS



THEN... JOT DOWN THE DOPE ABOUT IT ON THIS FORM, TEAR IT OUT, FOLD IT AND DROP IT IN THE MAIL!

# SOMETHING WRONG WITH THIS MANUAL?

FROM: (YOUR UNIT'S COMPLETE ADDRESS)

DATE

PUBLICATION NUMBER: **TM 11-5805-262-34P**

DATE: **22 May 78**

TITLE

BE EXACT... PIN-POINT WHERE IT IS				IN THIS SPACE TELL WHAT IS WRONG AND WHAT SHOULD BE DONE ABOUT IT:
PAGE NO.	PARA-GRAPH	FIGURE NO.	TABLE NO.	

TEAR ALONG DOTTED LINE

TYPED NAME, GRADE OR TITLE, AND TELEPHONE NUMBER

SIGN HERE:

FILL IN YOUR  
UNIT'S ADDRESS

FOLD BACK

DEPARTMENT OF THE ARMY

OFFICIAL BUSINESS

PENALTY FOR PRIVATE USE, \$300

Commander  
US Army Communications and  
Electronics Materiel Readiness Command  
ATTN: DRSEL-MA-Q  
Fort Monmouth, New Jersey 07703

FOLD BACK

TEAR ALONG DOTTED LINE

By Order of the Secretary of the Army:

**BERNARD W. ROGERS**  
*General, United States Army*  
*Chief of Staff*

Official:

**J. C. PENNINGTON**  
*Brigadier General, United States Army*  
*The Adjutant General*

**Distribution:**

<i>Active Army:</i>	Units org	under fol TOE	:-1 ea. UNOINDC
USAINSCOM (2)	11-15		29-56
COE (1)	11-16		29-207 (2)
TSG (1)	11-17		29-610 (2)
USAARENBD (1)	11-18		
DARCOM (1)	11-19		
TECOM (2)	11-25		
USACC (4)	11-26		
USACC-EUR (2)	11-27		
TRADOC (2)	11-35		
OS Maj Comd (4)	11-36		
HQ 7th Sig Comd (2)	11-37		
MDW (1)	11-38		
Armies (2)	11-39		
Corps (2)	11-45		
HISA (Ft Monmouth) (33)	11-46		
Fort Gillem (10)	11-47		
Fort Gordon (10)	11-85		
Fort Huachuca (10)	11-86		
Fort Carson (5)	11-87		
Ft Richardson (CERCOM Oft) (2)	11-95		
Svc Colleges (1)	11-97		
USASIGS (5)	11-98		
USAICS (3)	11-116		
USAADS (2)	11-117		
USAFAS (2)	11-127		
USAARMS (2)	11-137		
USAIS (2)	11-205		
USAES (2)	11-206		
AD (1) except	11-207		
SAAD (30)	11-215		
LBAD (14)	11-217		
TOAD (14)	11-218		
SHAD (3)	11-226		
USA Dep (1)	11-226		
Sig Sec USA Dep (1)	11-227		
USMA (2)	11-228		
USAJFKCENMA (2)	11-237		
USATC&S (2)	11-303		
USAQMS (2)	11-327		
USAEPG (2)	11-357		
MAAG (1)	11-367		
USARMIS (1)	11-377		
USAERDAA (1)	11-500 (AA-AC)		
USAERDAW (1)			

*ARNG: State AG (3); Units-Same as Active Army.*

*USAR: None.*

For explanation of abbreviations used, see AR 310-50.





